

Subscribe to
a New Way
of Purchasing
Construction
Technology

We get it. Updating or adopting new technology can feel like a huge hurdle. The financial strain, the uncertainty of where to start — it's overwhelming.

But there's a better way forward.

Contractors of any size can now access device licensing and software through flexible payment models. This approach reduces the need for significant upfront investments, giving you immediate access to advanced tools that help you reduce errors, boost productivity, and lower costs.

With this flexibility, you position yourself to stay ahead of the competition and fuel your business growth.



Turn upgrades into an **advantage**

The subscription-based pricing model is transforming how you can upgrade and enhance your fleet. With Trimble®, staying on top of technological advancements has never been easier. Upgrade on-machine and off-machine civil construction technology along with field-to-office connectivity without the hefty upfront costs.

By choosing construction technology on subscription, financial barriers are replaced with predictable, affordable monthly payments. You can confidently equip your entire team with the technology they need to stay ahead.

**With everyone on the same page,
your jobsite will experience:**

- Improved productivity.
- Easy office to field communication.
- Timely project delivery.



Turn choice into **confidence**



The Trimble Works subscription is more than just a solution, it's an opportunity to take full control of your technology needs. It's the industry's unique subscription that combines device licensing, software, and support into one subscription. A boost in productivity and profitability that helps you grow your business.

Because every contractor is different, Trimble Works subscription gives you the freedom to choose the mix of machine control, site surveying systems, and the hardware protection that aligns with your budget.

Each subscription includes a Trimble WorksManager field-to-office software license, enabling seamless data transfer and remote troubleshooting.

Plus, WorksManager's job site monitoring keeps you updated on machine locations and operations, ensuring you stay connected and in control.

**Trimble tech,
your terms.**

Stay upgraded, **stay supported**

With Works subscriptions, you never have to worry about being left behind. Continuous support, hardware upgrades, and automatic software updates keep you ahead of the curve.

Trimble authorized dealers ensure your installation and training are seamless, while our best-in-class support, calibration and maintenance services, keep you productive and efficient.

Seamless upgrades
Expert support
Minimise downtime



Breaking barriers to **technology access**

Stutsman-Gerbaz has been instrumental in the growth and development of the Roaring Fork Valley in Colorado, United States. Faced with increasing customer demands and labor shortage, they needed to integrate advanced GNSS technology to minimize rework and get projects done right.

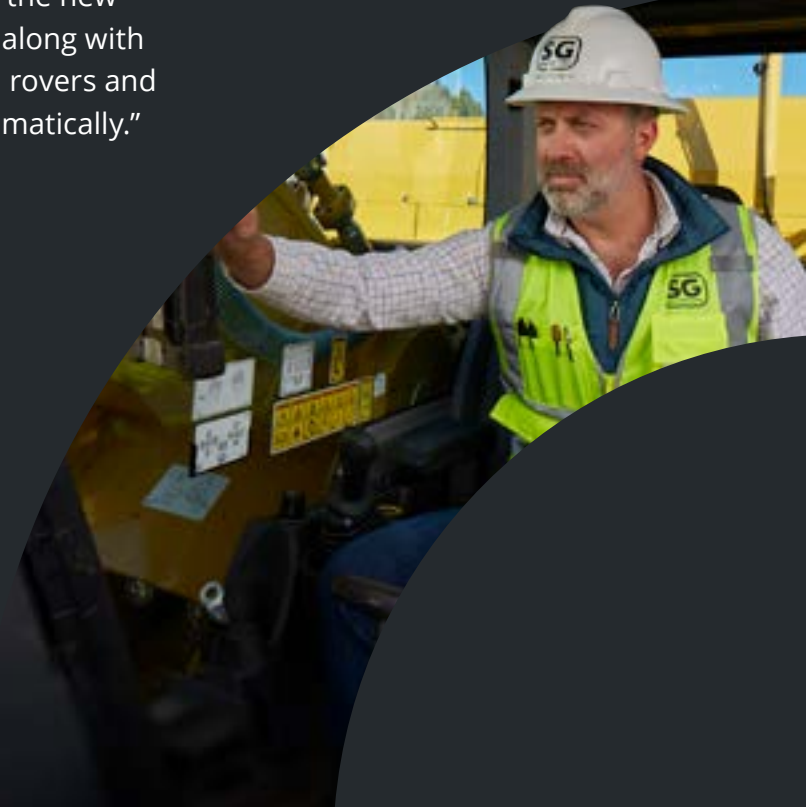
However, the upfront capital needed to upgrade their entire fleet was a significant barrier. Enter Trimble subscriptions — a game changer.

“It was a no-brainer for us to go with the subscription.”

- Shay Stutsman, President, Stutsman-Gerbaz

“This subscription was a real opportunity for our firm to equip the majority of the fleet with some additional benefits that go well beyond the availability of 3D grade control on a job,” explained Shay Stutsman.

“We are always current with all the new sensors, harnesses and cables along with software updates on desktops, rovers and tablets — and it’s all done automatically.”



CASE STUDY

Turning smart spending into **growth**

Redman Construction has been shaping Western New York's landscape for over 30 years. As demand grew, so did the need for advanced technology — but the upfront costs of upgrading their fleet posed a challenge. Trimble subscriptions changed that.

"Subscriptions offer a brilliant solution because we're minimizing our upfront costs. With the subscription, I don't have to worry about outdated software or communication between systems," explained JP McKinley.

"We're more profitable because of technology, despite increased labor, fuel, and material costs... Put simply, it allows me to sleep better at night."

- JP McKinley, Vice President, Redman Construction

"It's one less thing that I have to worry about in my day-to-day tasks. That's a subscription advantage that is irreplaceable."

With access to Trimble Earthworks and Siteworks through predictable monthly costs, Redman Construction boosts productivity, simplifies workforce training, and keeps long-term debt low, paving the way for future success.



Technology that works as hard as you do

Trimble Works equips you with the tools you need to streamline operations, remain agile, and thrive in today's competitive landscape. Now is the time to experience the benefits of construction technology and transform your business.

What you get:

- Game-changing tech for an affordable price
- Customized subscription bundles
- Hardware upgrades and automatic software updates included
- Available in three subscription tiers: Core, Pro and Premium

The benefits



Minimize downtime and rework



Generate more accurate bids



Take better control of technology-related costs



Complete projects faster



Enhance productivity and upskill your operators



Reduce maintenance and operating costs



Simplify technology management

Ready to subscribe?

01

Choose the perfect combination of software for your workflow and fleet.

02

Increase productivity with fixed, predictable monthly payments.

03

Enhance efficiency, reduce errors and monitor operations from anywhere.

Learn more about Works subscriptions or request a no-obligation quote today.

[LEARN MORE](#)

[REQUEST QUOTE](#)